

TMP 15 - City of Chilliwack Street Lighting 2020: Williams St @ Gore Ave Northbound



**Figure 11.2: Intersection Lane Closure - Two-Lane, Two-Way Roadway with TCPs (Near Side)
- Short and Long Duration
TCPs on site to assist with vehicles, pedestrians, bicyclists and all others**

TMP 16 - City of Chilliwack Street Lighting 2020: Williams St @ Gore Ave Southbound

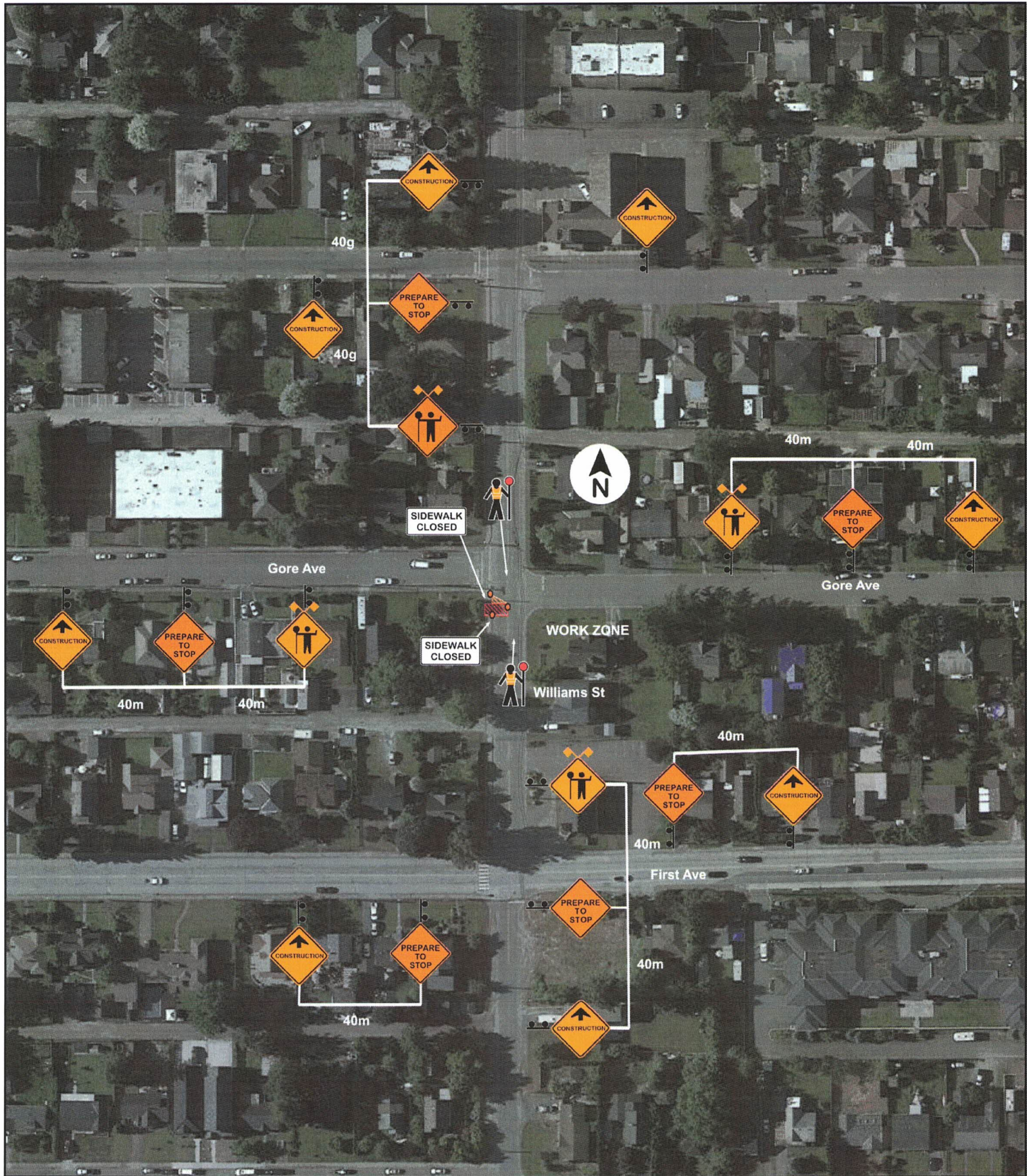


Figure 11.4: Intersection Lane Closure - Two-Lane, Two-Way Roadway with TCPs (Far Side) - Short and Long Duration
TCPs on site to assist with vehicles, pedestrians, bicyclists and all others

TMP 17 - City of Chilliwack Street Lighting 2020: Gore Ave @ Williams St Eastbound

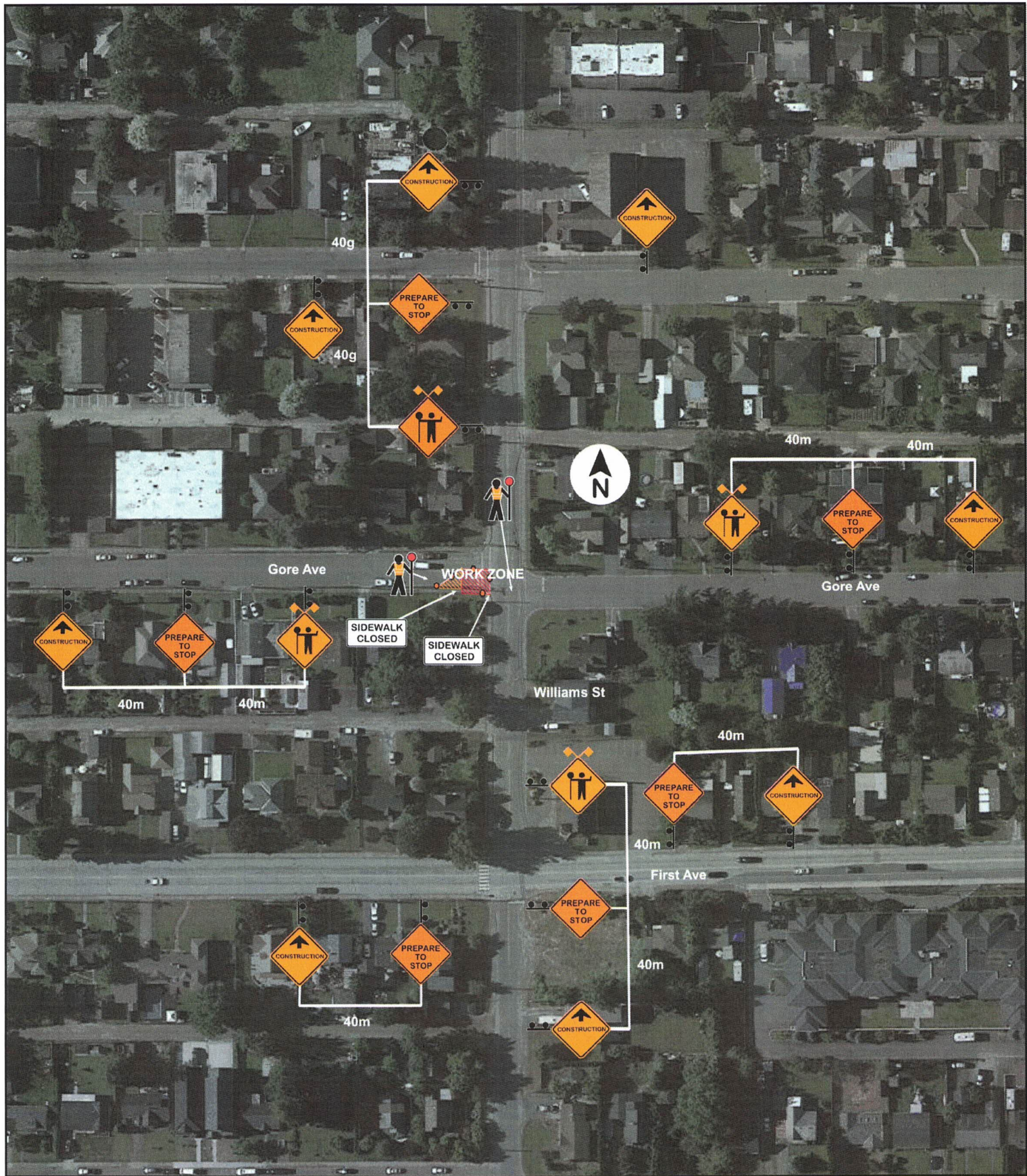


Figure 11.2: Intersection Lane Closure - Two-Lane, Two-Way Roadway with TCPs (Near Side) - Short and Long Duration
TCPs on site to assist with vehicles, pedestrians, bicyclists and all others

